



# 352

## Hydraulic Excavator

# Technical Specifications

Configurations and features may vary by region. Please consult your Cat® dealer for availability in your area.

### Table of Contents

<b>Specifications</b> .....	<b>2</b>
Engine .....	2
Swing Mechanism .....	2
Weights .....	2
Track .....	2
Drive .....	2
Hydraulic System .....	2
Service Refill Capacities .....	2
Standards .....	3
Sound Performance .....	3
Air Conditioning System .....	3
Operating Weights and Ground Pressures .....	4
Major Component Weights .....	5
Dimensions .....	6
Working Ranges and Forces .....	10
Reach Boom Lift Capacities .....	12
Mass Boom Lift Capacities .....	18
Bucket Specifications and Compatibility .....	23
Attachments Offering Guide .....	24
Typical Pass Match Guide .....	28
<b>Standard and Optional Equipment</b> .....	<b>29</b>
<b>Cab Options</b> .....	<b>31</b>
<b>Dealer Installed Kit and Attachments</b> .....	<b>32</b>
<b>352 Environmental Declaration</b> .....	<b>33</b>

# 352 Hydraulic Excavator Specifications

## Engine

Engine Model	C13B	
Net Power		
ISO 9249	330 kW	443 hp
ISO 9249 (DIN)	449 hp (metric)	
Engine Power		
ISO 14396	332 kW	445 hp
ISO 14396 (DIN)	451 hp (metric)	
Bore	130 mm	5 in
Stroke	157 mm	6 in
Displacement	12.5 L	763 in <sup>3</sup>

- Meets U.S. EPA Tier 4 Final, EU Stage V, and Japan 2014 emission standards.
- Recommended for use up to 4500 m (14,760 ft) altitude with engine power derate above 2600 m (8,530 ft).
- Advertised power is tested per the specified standard in effect at the time of manufacture.
- Net power is the power available at the flywheel when the engine is equipped with fan, air cleaner, muffler, and alternator with engine speed at 1,700 rpm.
- Cat diesel engines are required to use ULSD (ultra-low sulfur diesel fuel with 15 ppm of sulfur or less) or ULSD blended with the following lower-carbon intensity fuels\*\* up to:
  - ✓ 20% biodiesel FAME (fatty acid methyl ester)\*
  - ✓ 100% renewable diesel, HVO (hydrogenated vegetable oil) and GTL (gas-to-liquid) fuels

Refer to guidelines for successful application. Please consult your Cat dealer or “Caterpillar Machine Fluids Recommendations” (SEBU6250) for details.

*\*Engines with no aftertreatment devices can use higher blends, up to 100% biodiesel.*

*\*\*Tailpipe greenhouse gas emissions from lower-carbon intensity fuels are essentially the same as traditional fuels.*

## Swing Mechanism

Swing Speed	8.3 rpm	
Maximum Swing Torque	189 kN·m	139,000 lbf·ft

## Weights

Operating Weight	51 500 kg	113,500 lb
------------------	-----------	------------

- Variable gauge undercarriage, Reach boom, R2.9TB (9'6") stick, SD 2.5 m<sup>3</sup> (3.27 yd<sup>3</sup>) bucket, and 600 mm (24") triple grouser shoes, 9.8 mt (21,605 lb) counterweight.

## Track

Standard Track Shoes Width	600 mm	24 in
Optional Track Shoes Width	750 mm	30 in
Optional Track Shoes Width	900 mm	35 in
Number of Shoes (each side)	52	
Number of Track Rollers (each side)	9	
Number of Carrier Rollers (each side)	3	

## Drive

Maximum Gradeability	35°/70%	
Maximum Travel Speed	4.5 km/h	2.8 mph
Maximum Drawbar Pull	351 kN	78,908 lbf

## Hydraulic System

Main System – Maximum Flow (Implement)	779 L/min (389 × 2 pumps)	206 gal/min (103 × 2 pumps)
Maximum Pressure – Equipment – Implement	35 000 kPa	5,076 psi
Maximum Pressure – Equipment – Lift Mode	38 000 kPa	5,511 psi
Maximum Pressure – Travel	35 000 kPa	5,076 psi
Maximum Pressure – Swing	26 000 kPa	3,771 psi
Boom Cylinder – Bore	170 mm	7 in
Boom Cylinder – Stroke	1524 mm	60 in
Stick Cylinder – Bore	190 mm	7 in
Stick Cylinder – Stroke	1758 mm	69 in
TB Bucket Cylinder – Bore	160 mm	6 in
TB Bucket Cylinder – Stroke	1356 mm	53 in
UB Bucket Cylinder – Bore	170 mm	7 in
UB Bucket Cylinder – Stroke	1396 mm	55 in

## Service Refill Capacities

Fuel Tank Capacity	715 L	188.9 gal
Cooling System	52 L	13.7 gal
Engine Oil (with filter)	40 L	10.6 gal
Swing Drive	10.5 L	2.8 gal
Final Drive (each)	9.5 L	2.5 gal
Hydraulic System (including tank)	550 L	145.3 gal
Hydraulic Tank (including suction pipe)	217 L	57.3 gal
Diesel Exhaust Fluid (DEF) Tank	80 L	21.1 gal

# 352 Hydraulic Excavator Specifications

## Standards

Brakes	ISO 10265:2008
Cab/Operator Protective Guards (OPG) (optional)	ISO 10262:1998 Level II
Cab/Rollover Protective Structure (ROPS)	ISO 12117-2:2008

## Sound Performance

ISO 6395:2008 (external)	108 dB(A)
ISO 6396:2008 (inside cab)	73 dB(A)

- Hearing protection may be needed when operating with an open operator station and cab (when not properly maintained or doors/windows open) for extended periods or in a noisy environment.

## Air Conditioning System

The air conditioning system on this machine contains the fluorinated greenhouse gas refrigerant R134a (Global Warming Potential = 1430). The system contains 1.00 kg of refrigerant which has a CO<sub>2</sub> equivalent of 1430 metric tonne.

# 352 Hydraulic Excavator Specifications

## Operating Weights and Ground Pressures

Base Machine Configurations	600 mm (24") Triple Grouser Shoes		600 mm (24") Double Grouser Shoes		750 mm (30") Triple Grouser Shoes		900 mm (35") Triple Grouser Shoes	
	Weight	Ground Pressure	Weight	Ground Pressure	Weight	Ground Pressure	Weight	Ground Pressure
	kg (lb)	kPa (psi)	kg (lb)	kPa (psi)	kg (lb)	kPa (psi)	kg (lb)	kPa (psi)
<b>Base Frame with Single Frange Track Rollers and Carrier Rollers for Variable Gauge Long Undercarriage</b>								
<b>9.8 mt (21,605 lb) Counterweight</b>								
Reach Boom + R3.35 m (11'0") TB Stick + 3.30 m <sup>3</sup> (4.32 yd <sup>3</sup> ) GDC Bucket	51 300 (113,200)	89.9 (13.0)	51 500 (113,400)	89.8 (13.0)	52 100 (114,900)	73.0 (10.6)	52 800 (116,500)	61.7 (8.9)
Reach Boom + R2.9 m (9'6") TB Stick + 3.30 m <sup>3</sup> (4.32 yd <sup>3</sup> ) GDC Bucket	51 300 (113,000)	89.8 (13.0)	51 400 (113,300)	89.7 (13.0)	52 000 (114,700)	72.9 (10.6)	52 800 (116,300)	61.6 (8.9)
Mass Boom + M3.0 m (9'1") UB Stick + 3.5 m <sup>3</sup> (4.58 yd <sup>3</sup> ) GD Bucket	52 800 (116,400)	92.4 (13.4)	52 900 (116,600)	92.3 (13.4)	53 500 (118,000)	75.0 (10.9)	54 300 (119,700)	63.4 (9.2)
<b>Base Frame with Double Frange Track Rollers and Carrier Rollers for Variable Gauge Long Undercarriage</b>								
<b>9.8 mt (21,605 lb) Counterweight</b>								
Reach Boom + R3.35 m (11'0") TB Stick + 2.5 m <sup>3</sup> (3.27 yd <sup>3</sup> ) SD Bucket	51 600 (113,700)	84.9 (12.3)	51 700 (113,900)	84.9 (12.3)	52 300 (115,300)	69.0 (10.0)	53 100 (117,000)	58.4 (8.5)
Reach Boom + R2.9 m (9'6") TB Stick + 2.5 m <sup>3</sup> (3.27 yd <sup>3</sup> ) SD Bucket	51 500 (113,500)	84.8 (12.3)	51 600 (113,700)	84.7 (12.3)	52 200 (115,100)	68.9 (10.0)	53 000 (116,800)	58.3 (8.5)
Mass Boom + M3.0 m (9'1") UB Stick + 3.6 m <sup>3</sup> (4.71 yd <sup>3</sup> ) SD Bucket	53 100 (117,100)	87.7 (12.7)	53 200 (117,400)	87.6 (12.7)	53 900 (118,800)	71.2 (10.3)	54 600 (120,500)	60.2 (8.7)
Mass Boom + M2.5 m (8'2") UB Stick + 3.6 m <sup>3</sup> (4.71 yd <sup>3</sup> ) SD Bucket	53 000 (116,700)	87.4 (12.7)	53 100 (117,000)	87.3 (12.7)	53 700 (118,400)	71.0 (10.3)	54 500 (120,100)	60.0 (8.7)

All operating weights include a 90% fuel tank with 75 kg (165 lb) operator.

# 352 Hydraulic Excavator Specifications

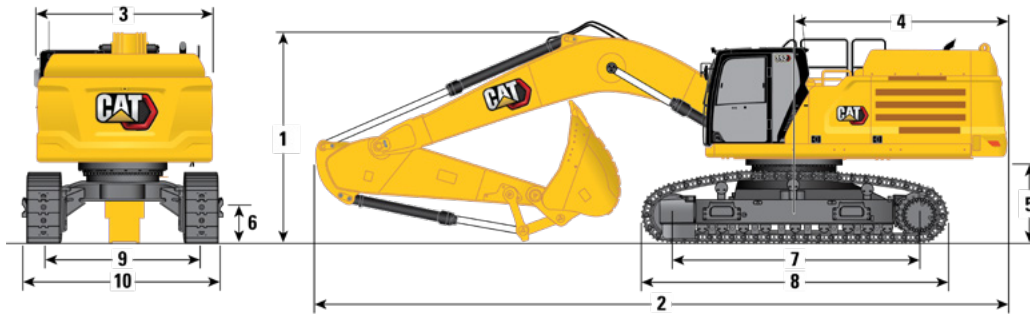
## Major Component Weights

	kg	lb
Base Machine with 9.8 mt (21,605 lb) Counterweight, Standard Swing Frame, Base Frame with Single Frange Track Rollers and Carrier Rollers for Variable Gauge Long Undercarriage	35 710	78,720
Base Machine with 9.8 mt (21,605 lb) Counterweight, Standard Swing Frame, Base Frame with Double Frange Track Rollers and Carrier Rollers for Variable Gauge Long Undercarriage	36 010	79,380
Track Shoes:		
600 mm (24") Width, Thick, Triple Grouser Track Shoes for Fixed Gauge and Variable Gauge Long Undercarriage	5290	11,660
600 mm (24") Width, Thick, Double Grouser Track Shoes for Fixed Gauge and Variable Gauge Long Undercarriage	5400	11,900
750 mm (30") Width, Thick, Triple Grouser Track Shoes for Fixed Gauge and Variable Gauge Long Undercarriage	6040	13,320
900 mm (35") Width, Thick, Triple Grouser Track Shoes for Fixed Gauge and Variable Gauge Long Undercarriage	6790	14,970
Two Boom Cylinders	920	2,020
Weight of 90% Fuel Tank and 75 kg (165 lb) Operator	630	1,380
Counterweight:		
9.8 mt (21,605 lb) Counterweight	9800	21,610
Swing Frame:		
Standard Swing Frame	4290	9,450
Fixed Gauge and Variable Gauge Long Undercarriages:		
Base Frame with Single Frange Track Rollers and Carrier Rollers for Variable Gauge Long Undercarriage	13 230	29,170
Base Frame with Double Frange Track Rollers and Carrier Rollers for Variable Gauge Long Undercarriage	13 270	29,250
Booms (including lines, pins, stick cylinder):		
Reach Boom 6.9 m (22'8")	4520	9,960
Mass Boom 6.55 m (21'6")	4800	10,590
Stick (including lines, pins, bucket cylinder, bucket linkage):		
Reach Stick R3.35TB (11'0")	2520	5,560
Reach Stick R2.9TB (9'6")	2440	5,380
Mass Stick M3.0UB (9'1")	2970	6,550
Mass Stick M2.5UB (8'2")	2790	6,160
Buckets (without linkage):		
2.5 m <sup>3</sup> (3.27 yd <sup>3</sup> ) SD for TB	2590	5,720
3.6 m <sup>3</sup> (4.71 yd <sup>3</sup> ) SDS for UB	3430	7,570
Quick Couplers (QC):		
CW Dedicated QC	770	1,690
Pin Grabber QC	1060	2,340

# 352 Hydraulic Excavator Specifications

## Dimensions

All dimensions are approximate and may vary depending on bucket selection.



### Boom Option

### Stick Options

### Undercarriage Option

#### 1 Machine Height:

	R3.35TB (11'0")		R2.9TB (9'6")	
	Variable Gauge		Variable Gauge	
Cab Height	3380 mm	11'1"	3380 mm	11'1"
OPG Height	3530 mm	11'7"	3530 mm	11'7"
Guardrails/Handrails Height	3530 mm	11'7"	3530 mm	11'7"
With Boom/Stick/Bucket Installed	3570 mm	11'9"	3720 mm	12'2"
With Boom/Stick Installed	3620 mm	11'11"	3560 mm	11'8"
With Boom Installed	3190 mm	10'6"	3190 mm	10'6"
With Boom/Stick/Bucket Installed (with auxiliary lines)	3600 mm	11'10"	3730 mm	12'3"
With Boom/Stick Installed (with auxiliary lines)	3640 mm	11'11"	3590 mm	11'9"
With Boom Installed (with auxiliary lines)	3230 mm	10'7"	3730 mm	12'3"

#### 2 Machine Length:

With Boom/Stick/Bucket Installed	11 820 mm	38'9"	11 860 mm	38'11"
With Boom/Stick Installed	11 840 mm	38'10"	11 800 mm	38'9"
With Boom Installed	10 590 mm	34'9"	10 590 mm	34'9"
With Boom/Stick/Bucket Installed (with auxiliary lines)	11 820 mm	38'9"	11 860 mm	38'11"
With Boom/Stick Installed (with auxiliary lines)	11 840 mm	38'10"	11 800 mm	38'9"
With Boom Installed (with auxiliary lines)	10 590 mm	34'9"	10 590 mm	34'9"

<b>3</b> Upperframe Width without Walkways	3020 mm	9'11"	3020 mm	9'11"
--	---------	-------	---------	-------

<b>4</b> Tail Swing Radius	3760 mm	12'4"	3760 mm	12'4"
----------------------------	---------	-------	---------	-------

<b>5</b> Counterweight Clearance VG Undercarriage (without shoe lug)	1435 mm	4'8"	1435 mm	4'8"
--	---------	------	---------	------

<b>6</b> Ground Clearance VG Undercarriage (without shoe lug)	710 mm	2'4"	710 mm	2'4"
---	--------	------	--------	------

<b>7</b> Length to Center of Rollers VG Undercarriage	4340 mm	14'3"	4340 mm	14'3"
---	---------	-------	---------	-------

Bucket Type	SD		SD	
-------------	----	--	----	--

Bucket Capacity	2.50 m <sup>3</sup>	3.27 yd <sup>3</sup>	2.50 m <sup>3</sup>	3.27 yd <sup>3</sup>
-----------------	---------------------	----------------------	---------------------	----------------------

Bucket Tip Radius	1912 mm	6'3"	1912 mm	6'3"
-------------------	---------	------	---------	------

(continued on next page)

# 352 Hydraulic Excavator Specifications

## Dimensions *(continued)*

All dimensions are approximate and may vary depending on bucket selection.



### Boom Option

### Stick Options

### Undercarriage Option

#### 8 Track Length

VG Undercarriage with Triple Grouser Shoe

**R3.35TB (11'0")**

**Variable Gauge**

**R2.9TB (9'6")**

**Variable Gauge**

5350 mm

17'7"

5350 mm

17'7"

#### 9 Track Gauge

Retracted with Triple Grouser Shoe (VG Undercarriage)

2390 mm

7'10"

2390 mm

7'10"

Extended (VG Undercarriage)

2890 mm

9'6"

2890 mm

9'6"

Track Width: VG Undercarriage Retracted

600 mm (24") Shoes (VG Undercarriage)

2990 mm

9'10"

2990 mm

9'10"

750 mm (30") Shoes (VG Undercarriage)

3140 mm

10'4"

3140 mm

10'4"

900 mm (35") Shoes (VG Undercarriage)

3540 mm

11'7"

3540 mm

11'7"

Track Width: VG Undercarriage Extended

600 mm (24") Shoes (VG Undercarriage)

3490 mm

11'5"

3490 mm

11'5"

750 mm (30") Shoes (VG Undercarriage)

3640 mm

11'11"

3640 mm

11'11"

900 mm (35") Shoes (VG Undercarriage)

3790 mm

12'5"

3790 mm

12'5"

#### 10 Undercarriage Width (with steps): VG Undercarriage Extended

600 mm (24") Shoes (VG Undercarriage)

3680 mm

12'1"

3680 mm

12'1"

750 mm (30") Shoes (VG Undercarriage)

3680 mm

12'1"

3680 mm

12'1"

900 mm (35") Shoes (VG Undercarriage)

3790 mm

12'5"

3790 mm

12'5"

Undercarriage Width (with steps): VG Undercarriage Retracted

600 mm (24") Shoes (VG Undercarriage)

3180 mm

10'5"

3180 mm

10'5"

750 mm (30") Shoes (VG Undercarriage)

3180 mm

10'5"

3180 mm

10'5"

900 mm (35") Shoes (VG Undercarriage)

3540 mm

11'7"

3540 mm

11'7"

Bucket Type

SD

SD

Bucket Capacity

2.50 m<sup>3</sup>

3.27 yd<sup>3</sup>

2.50 m<sup>3</sup>

3.27 yd<sup>3</sup>

Bucket Tip Radius

1912 mm

6'3"

1912 mm

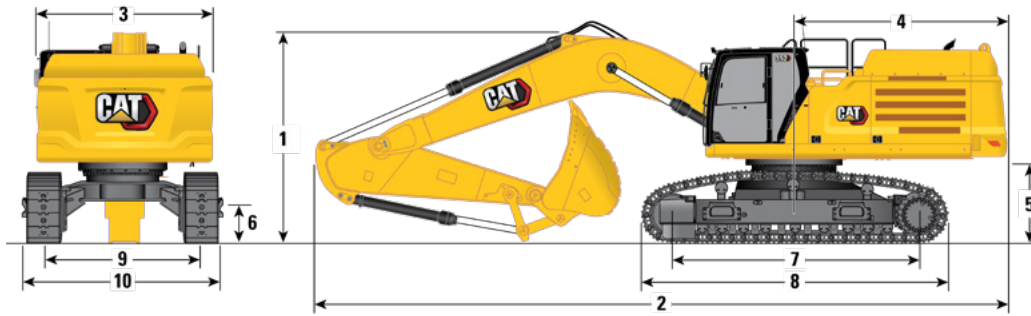
6'3"

*(continued on next page)*

# 352 Hydraulic Excavator Specifications

## Dimensions *(continued)*

All dimensions are approximate and may vary depending on bucket selection.



Boom Option	Mass Boom 6.55 m (21'6")			
Stick Options	Mass Stick			
	M3.0UB (9'10")		M2.5UB (8'2")	
Undercarriage Option	Variable Gauge		Variable Gauge	
<b>1 Machine Height:</b>				
Cab Height	3380 mm	11'1"	3380 mm	11'1"
OPG Height	3530 mm	11'7"	3530 mm	11'7"
Guardrails/Handrails Height	3530 mm	11'7"	3530 mm	11'7"
With Boom/Stick/Bucket Installed	4080 mm	13'5"	4050 mm	13'3"
With Boom/Stick Installed	3860 mm	12'8"	3830 mm	12'7"
With Boom Installed	3250 mm	10'8"	3250 mm	10'8"
With Boom/Stick/Bucket Installed (with auxiliary lines)	4080 mm	13'5"	4050 mm	13'3"
With Boom/Stick Installed (with auxiliary lines)	3860 mm	12'8"	3830 mm	12'7"
With Boom Installed (with auxiliary lines)	3280 mm	10'9"	3280 mm	10'9"
<b>2 Machine Length:</b>				
With Boom/Stick/Bucket Installed	11 550 mm	37'11"	11 630 mm	38'2"
With Boom/Stick Installed	11 490 mm	37'8"	11 550 mm	37'11"
With Boom Installed	10 220 mm	33'6"	10 220 mm	33'6"
With Boom/Stick/Bucket Installed (with auxiliary lines)	11 550 mm	37'11"	11 630 mm	38'2"
With Boom/Stick Installed (with auxiliary lines)	11 490 mm	37'8"	11 550 mm	37'11"
With Boom Installed (with auxiliary lines)	10 220 mm	33'6"	10 220 mm	33'6"
<b>3 Upperframe Width without Walkways</b>	3020 mm	9'11"	3020 mm	9'11"
<b>4 Tail Swing Radius</b>	3760 mm	12'4"	3760 mm	12'4"
<b>5 Counterweight Clearance VG Undercarriage (without shoe lug)</b>	1435 mm	4'8"	1435 mm	4'8"
<b>6 Ground Clearance VG Undercarriage (without shoe lug)</b>	710 mm	2'4"	710 mm	2'4"
<b>7 Length to Center of Rollers VG Undercarriage</b>	4340 mm	14'3"	4340 mm	14'3"
Bucket Type	SD		SD	
Bucket Capacity	3.50 m <sup>3</sup>	4.58 yd <sup>3</sup>	3.50 m <sup>3</sup>	4.58 yd <sup>3</sup>
Bucket Tip Radius	2106 mm	6'10"	2106 mm	6'10"

*(continued on next page)*

# 352 Hydraulic Excavator Specifications

## Dimensions (continued)

All dimensions are approximate and may vary depending on bucket selection.

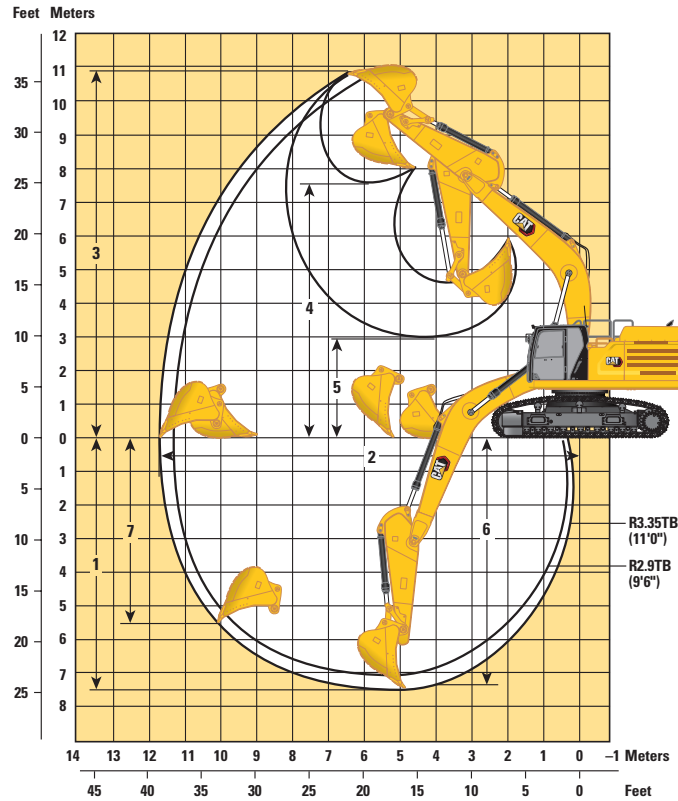


Boom Option	Mass Boom 6.55 m (21'6")			
Stick Options	Mass Stick			
	M3.0UB (9'10")		M2.5UB (8'2")	
Undercarriage Option	Variable Gauge		Variable Gauge	
<b>8</b> Track Length				
VG Undercarriage with Triple Grouser Shoe	5350 mm	17'7"	5350 mm	17'7"
<b>9</b> Track Gauge				
Retracted with Triple Grouser Shoe (VG Undercarriage)	2390 mm	7'10"	2390 mm	7'10"
Extended (VG Undercarriage)	2890 mm	9'6"	2890 mm	9'6"
Track Width: VG Undercarriage Retracted				
600 mm (24") Shoes (VG Undercarriage)	2990 mm	9'10"	2990 mm	9'10"
750 mm (30") Shoes (VG Undercarriage)	3140 mm	10'4"	3140 mm	10'4"
900 mm (35") Shoes (VG Undercarriage)	3540 mm	11'7"	3540 mm	11'7"
Track Width: VG Undercarriage Extended				
600 mm (24") Shoes (VG Undercarriage)	3490 mm	11'5"	3490 mm	11'5"
750 mm (30") Shoes (VG Undercarriage)	3640 mm	11'11"	3640 mm	11'11"
900 mm (35") Shoes (VG Undercarriage)	3790 mm	12'5"	3790 mm	12'5"
<b>10</b> Undercarriage Width (with steps): VG Undercarriage Extended				
600 mm (24") Shoes (VG Undercarriage)	3680 mm	12'1"	3680 mm	12'1"
750 mm (30") Shoes (VG Undercarriage)	3680 mm	12'1"	3680 mm	12'1"
900 mm (35") Shoes (VG Undercarriage)	3790 mm	12'5"	3790 mm	12'5"
Undercarriage Width (with steps): VG Undercarriage Retracted				
600 mm (24") Shoes (VG Undercarriage)	3180 mm	10'5"	3180 mm	10'5"
750 mm (30") Shoes (VG Undercarriage)	3180 mm	10'5"	3180 mm	10'5"
900 mm (35") Shoes (VG Undercarriage)	3540 mm	11'7"	3540 mm	11'7"
Bucket Type	SD		SD	
Bucket Capacity	3.50 m <sup>3</sup>	4.58 yd <sup>3</sup>	3.50 m <sup>3</sup>	4.58 yd <sup>3</sup>
Bucket Tip Radius	2106 mm	6'10"	2106 mm	6'10"

# 352 Hydraulic Excavator Specifications

## Working Ranges and Forces

All dimensions are approximate and may vary depending on bucket selection.



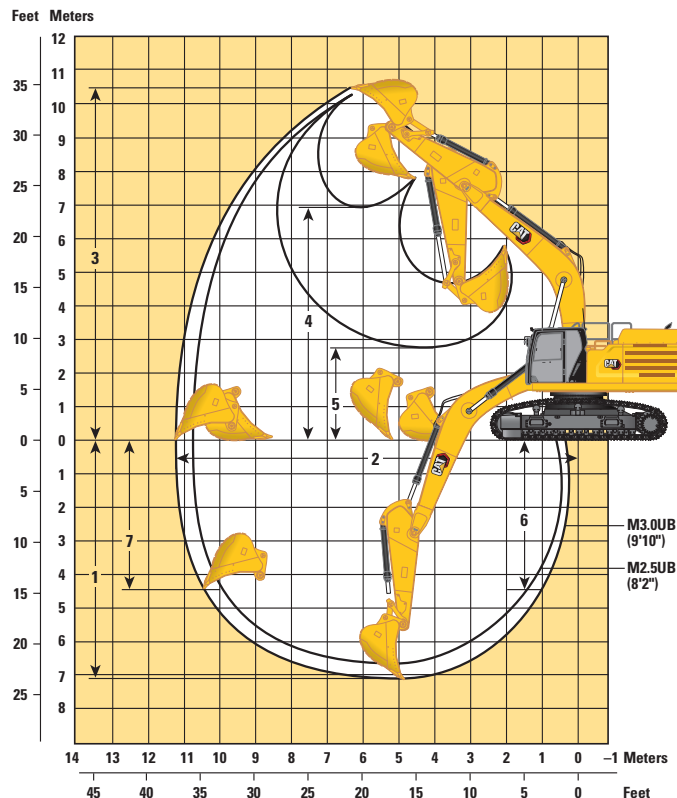
Boom Option	Reach Boom 6.9 m (22'8")			
	Stick Option			
Undercarriage Option	R3.35TB (11'0")		R2.9TB (9'6")	
	Variable Gauge		Variable Gauge	
1 Maximum Digging Depth	7530 mm	24'8"	7080 mm	23'3"
2 Maximum Reach at Ground Line	11 730 mm	38'6"	11 310 mm	37'1"
3 Maximum Cutting Height	10 870 mm	35'8"	10 690 mm	35'1"
4 Maximum Loading Height	7560 mm	24'10"	7380 mm	24'3"
5 Minimum Loading Height	2880 mm	9'5"	3330 mm	10'11"
6 Maximum Depth Cut for 2440 mm (8'0") Level Bottom	7380 mm	24'3"	6920 mm	22'8"
7 Maximum Vertical Wall Digging Depth	5150 mm	16'11"	4750 mm	15'7"
Bucket Digging Force (ISO)	264 kN	59,300 lbf	264 kN	59,300 lbf
Stick Digging Force (ISO)	200 kN	45,000 lbf	220 kN	49,500 lbf
Bucket Type	SD		SD	
Bucket Capacity	2.50 m <sup>3</sup>	3.27 yd <sup>3</sup>	2.50 m <sup>3</sup>	3.27 yd <sup>3</sup>
Bucket Tip Radius	1912 mm	6'3"	1912 mm	6'3"

(continued on next page)

# 352 Hydraulic Excavator Specifications

## Working Ranges and Forces (continued)

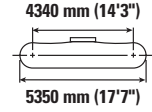
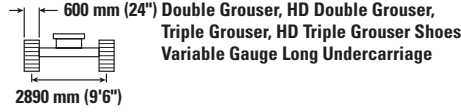
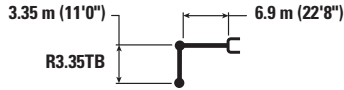
All dimensions are approximate and may vary depending on bucket selection.



<b>Boom Option</b>	<b>Mass Boom 6.55 m (21'6")</b>			
<b>Stick Option</b>	<b>Mass Stick</b>			
	<b>M3.0UB (9'10")</b>		<b>M2.5UB (8'2")</b>	
<b>Undercarriage Option</b>	<b>Variable Gauge</b>		<b>Variable Gauge</b>	
<b>1</b> Maximum Digging Depth	7140 mm	23'5"	6640 mm	21'9"
<b>2</b> Maximum Reach at Ground Line	11 230 mm	36'10"	10 760 mm	35'4"
<b>3</b> Maximum Cutting Height	10 450 mm	34'3"	10 250 mm	33'8"
<b>4</b> Maximum Loading Height	6910 mm	22'8"	6720 mm	22'1"
<b>5</b> Minimum Loading Height	2740 mm	9'0"	3240 mm	10'8"
<b>6</b> Maximum Depth Cut for 2440 mm (8'0") Level Bottom	6990 mm	14'7"	6470 mm	13'2"
<b>7</b> Maximum Vertical Wall Digging Depth	4450 mm	14'7"	4020 mm	13'2"
Bucket Digging Force (ISO)	292 kN	65,600 lbf	292 kN	65,600 lbf
Stick Digging Force (ISO)	211 kN	47,400 lbf	240 kN	54,000 lbf
Bucket Type	SD		SD	
Bucket Capacity	3.50 m <sup>3</sup>	4.58 yd <sup>3</sup>	3.50 m <sup>3</sup>	4.58 yd <sup>3</sup>
Bucket Tip Radius	2106 mm	6'10"	2106 mm	6'10"

# 352 Hydraulic Excavator Specifications

## Reach Boom Lift Capacities – Counterweight: 9.8 mt (21,605 lb) – without Bucket, Heavy Lift: On



		3000 mm/10'0"		4500 mm/15'0"		6000 mm/20'0"		7500 mm/25'0"		9000 mm/30'0"		mm ft/in		
9000 mm 30'0"	kg lb											*8900 *19,750	*8900 *19,750	7450 23'11"
7500 mm 25'0"	kg lb							*11 900 *26,150	*11 900 *26,150			*8400 *18,600	*8400 *18,600	8580 27'10"
6000 mm 20'0"	kg lb							*12 550 *27,300	12 400 26,650	*11 150 *21,500	9200 19,800	*8300 *18,250	*8300 *18,250	9340 30'5"
4500 mm 15'0"	kg lb			*21 200 *45,400	*21 200 *45,400	*16 150 *34,900	*16 150 *34,900	*13 650 *29,650	11 950 25,750	*12 200 *26,650	9050 19,450	*8450 *18,550	7850 17,400	9800 32'1"
3000 mm 10'0"	kg lb			*26 050 *55,950	23 950 51,650	*18 500 *40,000	15 800 34,050	*14 900 *32,300	11 500 24,750	*12 850 *27,900	8800 18,900	*8800 *19,350	7450 16,450	10 020 32'10"
1500 mm 5'0"	kg lb			*18 450 *43,950	*18 450 *43,950	*20 300 *43,900	15 050 32,500	*15 950 *34,550	11 050 23,850	12 900 27,750	8550 18,400	*9450 *20,750	7350 16,150	10 010 32'9"
0 mm 0'0"	kg lb			*21 450 *49,750	*21 450 48,050	*21 050 *45,600	14 650 31,550	*16 500 35,650	10 750 23,200	12 700 27,350	8400 18,050	*10 500 *23,100	7500 16,550	9760 32'0"
-1500 mm -5'0"	kg lb	*15 750 *35,500	*15 750 *35,500	*27 400 *59,450	22 350 47,950	*20 750 *44,950	14 500 31,200	*16 350 35,350	10 650 22,900	12 650 27,250	8350 18,000	12 150 26,850	8050 17,700	9270 30'4"
-3000 mm -10'0"	kg lb	*24 800 *56,050	*24 800 *56,050	*24 900 *53,950	22 550 48,400	*19 300 *41,700	14 550 31,350	*15 150 *32,600	10 700 23,050			*12 700 *27,950	9100 20,200	8470 27'8"
-4500 mm -15'0"	kg lb	*26 450 *56,950	*26 450 *56,950	*20 750 *44,550	*20 750 *44,550	*16 150 *34,550	14 850 32,000					*12 400 *27,250	11 400 25,500	7290 23'7"



ISO 10567:2007



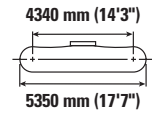
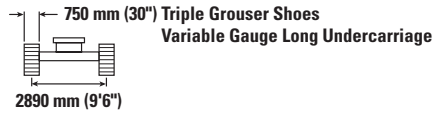
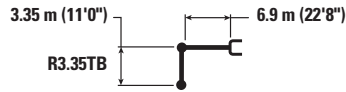
\* Indicates that the load is limited by hydraulic lifting capacity rather than tipping load. The above loads are in compliance with hydraulic excavator lift capacity standard ISO 10567:2007. They do not exceed 87% of hydraulic lifting capacity or 75% of tipping load. Weight of all lifting accessories must be deducted from the above lifting capacities. Lifting capacities are based on the machine standing on a firm, uniform supporting surface. The use of a work tool attachment point to handle/lift objects, could affect the machine lift performance.

Lift capacity stays with ±5% for all available track shoes.

Always refer to the appropriate Operation and Maintenance Manual for specific product information.

# 352 Hydraulic Excavator Specifications

## Reach Boom Lift Capacities – Counterweight: 9.8 mt (21,605 lb) – without Bucket, Heavy Lift: On



Reach	Unit	3000 mm/10'0"		4500 mm/15'0"		6000 mm/20'0"		7500 mm/25'0"		9000 mm/30'0"		mm ft/in		
		kg lb	kg lb	kg lb	kg lb	kg lb	kg lb	kg lb	kg lb	kg lb	kg lb	kg lb	kg lb	
9000 mm 30'0"	kg lb											*8900 *19,750	*8900 *19,750	7450 23'11"
7500 mm 25'0"	kg lb							*11 900 *26,150	*11 900 *26,150			*8400 *18,600	*8400 *18,600	8580 27'10"
6000 mm 20'0"	kg lb							*12 550 *27,300	12 400 26,700	*11 150 *21,500	9250 19,850	*8300 *18,250	*8300 *18,250	9340 30'5"
4500 mm 15'0"	kg lb			*21 200 *45,400	*21 200 *45,400	*16 150 *34,900	*16 150 *34,900	*13 650 *29,650	12 000 25,800	*12 200 *26,650	9050 19,500	*8450 *18,550	7900 17,450	9800 32'1"
3000 mm 10'0"	kg lb			*26 050 *55,950	24 000 51,800	*18 500 *40,000	15 850 34,150	*14 900 *32,300	11 500 24,800	*12 850 *27,900	8800 19,000	*8800 *19,350	7500 16,500	10 020 32'10"
1500 mm 5'0"	kg lb			*18 450 *43,950	*18 450 *43,950	*20 300 *43,900	15 100 32,600	*15 950 *34,550	11 100 23,900	12 950 27,850	8600 18,500	*9450 *20,750	7350 16,200	10 010 32'9"
0 mm 0'0"	kg lb			*21 450 *49,750	*21 450 48,200	*21 050 *45,600	14 700 31,650	*16 500 35,800	10 800 23,250	12 750 27,450	8400 18,150	*10 500 *23,100	7550 16,600	9760 32'0"
-1500 mm -5'0"	kg lb	*15 750 *35,500	*15 750 *35,500	*27 400 *59,450	22 400 48,100	*20 750 *44,950	14 550 31,300	*16 350 *35,400	10 650 23,000	12 700 27,350	8350 18,050	12 200 26,900	8050 17,750	9270 30'4"
-3000 mm -10'0"	kg lb	*24 800 *56,050	*24 800 *56,050	*24 900 *53,950	22 600 48,550	*19 300 *41,700	14 600 31,450	*15 150 *32,600	10 700 23,100			*12 700 *27,950	9150 20,250	8470 27'8"
-4500 mm -15'0"	kg lb	*26 450 *56,950	*26 450 *56,950	*20 750 *44,550	*20 750 *44,550	*16 150 *34,550	14 900 32,100					*12 400 *27,250	11 450 25,600	7290 23'7"



ISO 10567:2007



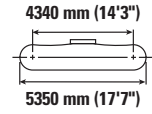
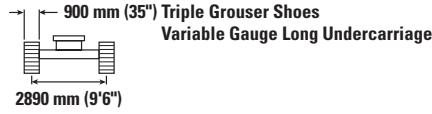
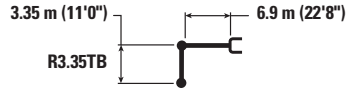
\* Indicates that the load is limited by hydraulic lifting capacity rather than tipping load. The above loads are in compliance with hydraulic excavator lift capacity standard ISO 10567:2007. They do not exceed 87% of hydraulic lifting capacity or 75% of tipping load. Weight of all lifting accessories must be deducted from the above lifting capacities. Lifting capacities are based on the machine standing on a firm, uniform supporting surface. The use of a work tool attachment point to handle/lift objects, could affect the machine lift performance.

Lift capacity stays with ±5% for all available track shoes.

Always refer to the appropriate Operation and Maintenance Manual for specific product information.

# 352 Hydraulic Excavator Specifications

## Reach Boom Lift Capacities – Counterweight: 9.8 mt (21,605 lb) – without Bucket, Heavy Lift: On



		3000 mm/10'0"		4500 mm/15'0"		6000 mm/20'0"		7500 mm/25'0"		9000 mm/30'0"		mm ft/in		
9000 mm 30'0"	kg lb											*8900 *19,750	*8900 *19,750	7450 23'11"
7500 mm 25'0"	kg lb							*11 900 *26,150	*11 900 *26,150			*8400 *18,600	*8400 *18,600	8580 27'10"
6000 mm 20'0"	kg lb							*12 550 *27,300	12 400 26,700	*11 150 *21,500	9250 19,850	*8300 *18,250	*8300 *18,250	9340 30'5"
4500 mm 15'0"	kg lb			*21 200 *45,400	*21 200 *45,400	*16 150 *34,900	*16 150 *34,900	*13 650 *29,650	12 000 25,800	*12 200 *26,650	9050 19,500	*8450 *18,550	7900 17,450	9800 32'1"
3000 mm 10'0"	kg lb			*26 050 *55,950	24 000 51,800	*18 500 *40,000	15 850 34,150	*14 900 *32,300	11 500 24,800	*12 850 *27,900	8800 19,000	*8800 *19,350	7500 16,500	10 020 32'10"
1500 mm 5'0"	kg lb			*18 450 *43,950	*18 450 *43,950	*20 300 *43,900	15 100 32,600	*15 950 *34,550	11 100 23,900	12 950 27,850	8600 18,500	*9450 *20,750	7350 16,200	10 010 32'9"
0 mm 0'0"	kg lb			*21 450 *49,750	*21 450 48,200	*21 050 *45,600	14 700 31,650	*16 500 35,800	10 800 23,250	12 750 27,450	8400 18,150	*10 500 *23,100	7550 16,600	9760 32'0"
-1500 mm -5'0"	kg lb	*15 750 *35,500	*15 750 *35,500	*27 400 *59,450	22 400 48,100	*20 750 *44,950	14 550 31,300	*16 350 *35,400	10 650 23,000	12 700 27,350	8350 18,050	12 200 26,900	12 200 17,750	8050 30'4"
-3000 mm -10'0"	kg lb	*24 800 *56,050	*24 800 *56,050	*24 900 *53,950	22 600 48,550	*19 300 *41,700	14 600 31,450	*15 150 *32,600	10 700 23,100			*12 700 *27,950	9150 20,250	8470 27'8"
-4500 mm -15'0"	kg lb	*26 450 *56,950	*26 450 *56,950	*20 750 *44,550	*20 750 *44,550	*16 150 *34,550	14 900 32,100					*12 400 *27,250	11 450 25,600	7290 23'7"



ISO 10567:2007



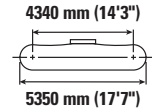
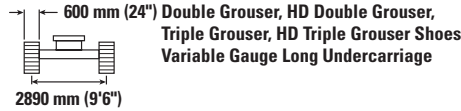
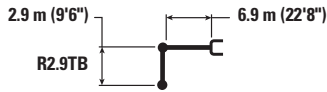
\* Indicates that the load is limited by hydraulic lifting capacity rather than tipping load. The above loads are in compliance with hydraulic excavator lift capacity standard ISO 10567:2007. They do not exceed 87% of hydraulic lifting capacity or 75% of tipping load. Weight of all lifting accessories must be deducted from the above lifting capacities. Lifting capacities are based on the machine standing on a firm, uniform supporting surface. The use of a work tool attachment point to handle/lift objects, could affect the machine lift performance.

Lift capacity stays with ±5% for all available track shoes.

Always refer to the appropriate Operation and Maintenance Manual for specific product information.

# 352 Hydraulic Excavator Specifications

## Reach Boom Lift Capacities – Counterweight: 9.8 mt (21,605 lb) – without Bucket, Heavy Lift: On



		3000 mm/10'0"		4500 mm/15'0"		6000 mm/20'0"		7500 mm/25'0"		9000 mm/30'0"		mm ft/in		
9000 mm 30'0"	kg lb											*10 600 *23,600	*10 600 *23,600	6880 22'0"
7500 mm 25'0"	kg lb							*12 700 *27,900	12 400 26,600			*10 000 *22,050	*10 000 *22,050	8090 26'3"
6000 mm 20'0"	kg lb					*14 900 *32,200	*14 900 *32,200	*13 200 *28,750	12 150 26,200			*9 850 *21,650	9250 20,500	8890 29'0"
4500 mm 15'0"	kg lb			*22 850 *48,900	*22 850 *48,900	*17 000 *36,750	16 350 35,300	*14 250 *30,900	11 750 25,350	*12 700 *27,700	8900 19,150	*10 000 *22,000	8350 18,400	9380 30'8"
3000 mm 10'0"	kg lb			*17 450 *45,350	*17 450 *45,350	*19 250 *41,500	15 500 33,450	*15 400 *33,350	11 300 24,400	13 000 27,950	8700 18,700	*10 500 *23,000	7900 17,350	9610 31'6"
1500 mm 5'0"	kg lb			*13 950 *34,000	*13 950 *34,000	*20 750 *44,850	14 850 32,050	*16 300 *35,300	10 950 23,600	12 800 27,500	8500 18,300	*11 300 *24,850	7750 17,050	9600 31'5"
0 mm 0'0"	kg lb			*20 300 *47,200	*20 300 *47,200	*21 150 *45,850	14 550 31,300	16 450 35,400	10 700 23,050	12 650 27,200	8350 18,000	12 000 26,450	7950 17,550	9340 30'7"
-1500 mm -5'0"	kg lb	*16 150 *36,600	*16 150 *36,600	*26 550 *57,700	22 300 47,900	*20 500 *44,450	14 450 31,100	*16 200 *35,050	10 600 22,850			13 000 28,700	8600 18,950	8820 28'10"
-3000 mm -10'0"	kg lb	*27 650 *62,600	*27 650 *62,600	*23 650 *51,300	22 550 48,450	*18 650 *40,250	14 550 31,350	*14 550 *31,050	10 700 23,150			*13 150 *29,000	9900 22,000	7980 26'0"
-4500 mm -15'0"	kg lb			*18 900 *40,550	*18 900 *40,550	*14 750 *31,250	*14 750 *31,250					*12 550 *27,500	*12 550 *27,500	6700 21'8"



ISO 10567:2007



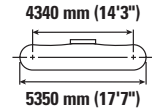
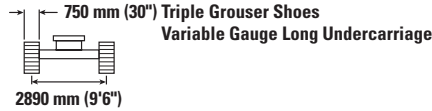
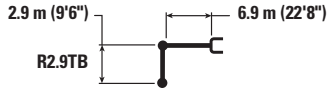
\* Indicates that the load is limited by hydraulic lifting capacity rather than tipping load. The above loads are in compliance with hydraulic excavator lift capacity standard ISO 10567:2007. They do not exceed 87% of hydraulic lifting capacity or 75% of tipping load. Weight of all lifting accessories must be deducted from the above lifting capacities. Lifting capacities are based on the machine standing on a firm, uniform supporting surface. The use of a work tool attachment point to handle/lift objects, could affect the machine lift performance.

Lift capacity stays with ±5% for all available track shoes.

Always refer to the appropriate Operation and Maintenance Manual for specific product information.

# 352 Hydraulic Excavator Specifications

## Reach Boom Lift Capacities – Counterweight: 9.8 mt (21,605 lb) – without Bucket, Heavy Lift: On



		3000 mm/10'0"		4500 mm/15'0"		6000 mm/20'0"		7500 mm/25'0"		9000 mm/30'0"		mm ft/in		
9000 mm 30'0"	kg lb											*10 600 *23,600	*10 600 *23,600	6880 22'0"
7500 mm 25'0"	kg lb							*12 700 *27,900	12 500 26,850			*10 000 *22,050	*10 000 *22,050	8090 26'3"
6000 mm 20'0"	kg lb					*14 900 *32,200	*14 900 *32,200	*13 200 *28,750	12 300 26,450			*9850 *21,650	9350 20,750	8890 29'0"
4500 mm 15'0"	kg lb			*22 850 *48,900	*22 850 *48,900	*17 000 *36,750	16 550 35,650	*14 250 *30,900	11 900 25,600	*12 700 *27,700	9000 19,350	*10 000 *22,000	8450 18,650	9380 30'8"
3000 mm 10'0"	kg lb			*17 450 *45,350	*17 450 *45,350	*19 250 *41,500	15 650 33,800	*15 400 *33,350	11 450 24,650	13 150 28,300	8800 18,900	*10 500 *23,000	7950 17,550	9610 31'6"
1500 mm 5'0"	kg lb			*13 950 *34,000	*13 950 *34,000	*20 750 *44,850	15 050 32,400	*16 300 *35,300	11 050 23,850	12 950 27,850	8600 18,500	*11 300 *24,850	7850 17,300	9600 31'5"
0 mm 0'0"	kg lb			*20 300 *47,200	*20 300 *47,200	*21 150 *45,850	14 700 31,650	16 650 35,800	10 800 23,300	12 800 27,550	8450 18,250	12 150 26,750	8050 17,750	9340 30'7"
-1500 mm -5'0"	kg lb	*16 150 *36,600	*16 150 *36,600	*26 550 *57,700	22 550 48,400	*20 500 *44,450	14 600 31,450	*16 200 *35,050	10 750 23,150			13 150 *29,000	8700 19,150	8820 28'10"
-3000 mm -10'0"	kg lb	*27 650 *62,600	*27 650 *62,600	*23 650 *51,300	22 800 49,000	*18 650 *40,250	14 750 31,750	*14 550 *31,050	10 850 23,400			*13 150 *29,000	10 050 22,250	7980 26'0"
-4500 mm -15'0"	kg lb			*18 900 *40,550	*18 900 *40,550	*14 750 *31,250	*14 750 *31,250					*12 550 *27,500	*12 550 *27,500	6700 21'8"



ISO 10567:2007



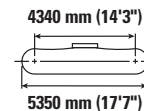
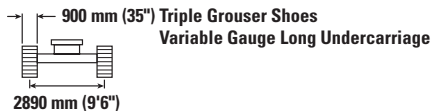
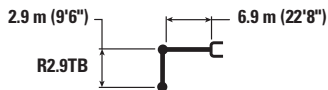
\* Indicates that the load is limited by hydraulic lifting capacity rather than tipping load. The above loads are in compliance with hydraulic excavator lift capacity standard ISO 10567:2007. They do not exceed 87% of hydraulic lifting capacity or 75% of tipping load. Weight of all lifting accessories must be deducted from the above lifting capacities. Lifting capacities are based on the machine standing on a firm, uniform supporting surface. The use of a work tool attachment point to handle/lift objects, could affect the machine lift performance.

Lift capacity stays with ±5% for all available track shoes.

Always refer to the appropriate Operation and Maintenance Manual for specific product information.

# 352 Hydraulic Excavator Specifications

## Reach Boom Lift Capacities – Counterweight: 9.8 mt (21,605 lb) – without Bucket, Heavy Lift: On



		3000 mm/10'0"		4500 mm/15'0"		6000 mm/20'0"		7500 mm/25'0"		9000 mm/30'0"		mm ft/in		
9000 mm 30'0"	kg lb											*10 600 *23,600	*10 600 *23,600	6880 22'0"
7500 mm 25'0"	kg lb							*12 700 *27,900	12 650 27,150			*10 000 *22,050	*10 000 *22,050	8090 26'3"
6000 mm 20'0"	kg lb					*14 900 *32,200	*14 900 *32,200	*13 200 *28,750	12 450 26,750			*9850 *21,650	9450 21,000	8890 29'0"
4500 mm 15'0"	kg lb			*22 850 *48,900	*22 850 *48,900	*17 000 *36,750	16 750 36,100	*14 250 *30,900	12 050 25,950	*12 700 *27,700	9150 19,600	*10 000 *22,000	8550 18,900	9380 30'8"
3000 mm 10'0"	kg lb			*17 450 *45,350	*17 450 *45,350	*19 250 *41,500	15 850 34,250	*15 400 *33,350	11 600 25,000	*13 200 *28,700	8900 19,150	*10 500 *23,000	8100 17,800	9610 31'6"
1500 mm 5'0"	kg lb			*13 950 *34,000	*13 950 *34,000	*20 750 *44,850	15 250 32,850	*16 300 *35,300	11 200 24,150	13 100 28,200	8700 18,750	*11 300 *24,850	7950 17,500	9600 31'5"
0 mm 0'0"	kg lb			*20 300 *47,200	*20 300 *47,200	*21 150 *45,850	14 900 32,100	*16 650 *36,050	10 950 23,650	12 950 27,950	8600 18,500	12 350 27,150	8150 18,000	9340 30'7"
-1500 mm -5'0"	kg lb	*16 150 *36,600	*16 150 *36,600	*26 550 *57,700	22 850 49,050	*20 500 *44,450	14 800 31,900	*16 200 *35,050	10 900 23,450			*13 150 *29,000	8800 19,450	8820 28'10"
-3000 mm -10'0"	kg lb	*27 650 *62,600	*27 650 *62,600	*23 650 *51,300	23 100 49,650	*18 650 *40,250	14 950 32,150	*14 550 *31,050	11 000 23,750			*13 150 *29,000	10 150 22,550	7980 26'0"
-4500 mm -15'0"	kg lb			*18 900 *40,550	*18 900 *40,550	*14 750 *31,250	*14 750 *31,250					*12 550 *27,500	*12 550 *27,500	6700 21'8"



ISO 10567:2007



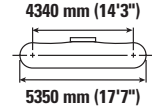
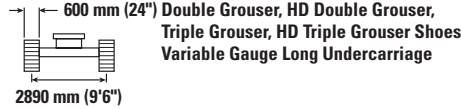
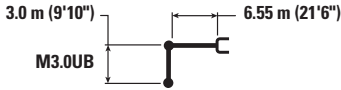
\* Indicates that the load is limited by hydraulic lifting capacity rather than tipping load. The above loads are in compliance with hydraulic excavator lift capacity standard ISO 10567:2007. They do not exceed 87% of hydraulic lifting capacity or 75% of tipping load. Weight of all lifting accessories must be deducted from the above lifting capacities. Lifting capacities are based on the machine standing on a firm, uniform supporting surface. The use of a work tool attachment point to handle/lift objects, could affect the machine lift performance.

Lift capacity stays with ±5% for all available track shoes.

Always refer to the appropriate Operation and Maintenance Manual for specific product information.

# 352 Hydraulic Excavator Specifications

## Mass Boom Lift Capacities – Counterweight: 9.8 mt (21,605 lb) – without Bucket, Heavy Lift: On



Boom Length	Unit	3000 mm/10'0"		4500 mm/15'0"		6000 mm/20'0"		7500 mm/25'0"		9000 mm/30'0"		mm ft/in		
		kg lb	kg lb	kg lb	kg lb	kg lb	kg lb	kg lb	kg lb	kg lb	kg lb	kg lb	mm ft/in	
9000 mm 30'0"	kg lb											*10 700	*10 700	6500
7500 mm 25'0"	kg lb							*12 300 *23,500	12250 *23,500			*9900 *21,950	*9900 *21,950	7780 25'2"
6000 mm 20'0"	kg lb					*31,050	*31,050	*12 950 *28,250	12 100 25,950			*9700 *21,350	9550 21,300	8610 28'0"
4500 mm 15'0"	kg lb			*21 250 *45,500	*21 250 *45,500	*16 300 *35,200	*16 300 *35,200	*13 850 *30,100	11 650 25,100	*11 300	8700	*9850 *21,600	8550 18,900	9110 29'9"
3000 mm 10'0"	kg lb			*25 850 *55,500	23 600 50,950	*18 500 *39,900	15 500 33,450	*14 950 *32,400	11 200 24,100	12 850	8500	*10 300 *22,600	8000 17,650	9340 30'7"
1500 mm 5'0"	kg lb			*22 700 *54,400	22 400 48,200	*20 100 *43,500	14 750 31,850	*15 850 *34,350	10 800 23,200	12 650	8300	*11 100 *24,450	7850 17,300	9330 30'7"
0 mm 0'0"	kg lb			*26 650 *61,000	22 000 47,250	*20 700 *44,850	14 350 30,900	*16 250 35,150	10 500	12 500	8150	12 400 27,250	8100 17,800	9070 29'8"
-1500 mm -5'0"	kg lb	*18 950 *42,800	*18 950 *42,800	*26 600 *57,700	22 000 47,200	*20 150 *43,650	14 200 30,550	*15 800 *34,100	10 400			*13 300 *29,250	8750 19,350	8530 27'11"
-3000 mm -10'0"	kg lb	*30 650 *66,600	*30 650 *66,600	*23 600 *51,100	22 250 47,750	*18 250 *39,300	14 300 30,850	*13 800	10550			*13 300 *29,250	10 250 22,750	7660 24'11"
-4500 mm -15'0"	kg lb			*18 350 *39,200	*18 350 *39,200	*13 700 *28,650	*13 700 *28,650					*12 600 *27,550	*12 600 *27,550	6310 20'5"



ISO 10567:2007



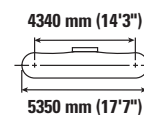
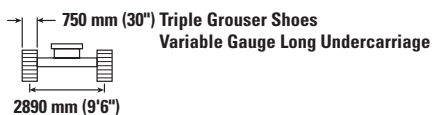
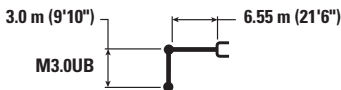
\* Indicates that the load is limited by hydraulic lifting capacity rather than tipping load. The above loads are in compliance with hydraulic excavator lift capacity standard ISO 10567:2007. They do not exceed 87% of hydraulic lifting capacity or 75% of tipping load. Weight of all lifting accessories must be deducted from the above lifting capacities. Lifting capacities are based on the machine standing on a firm, uniform supporting surface. The use of a work tool attachment point to handle/lift objects, could affect the machine lift performance.

Lift capacity stays with ±5% for all available track shoes.

Always refer to the appropriate Operation and Maintenance Manual for specific product information.

# 352 Hydraulic Excavator Specifications

## Mass Boom Lift Capacities – Counterweight: 9.8 mt (21,605 lb) – without Bucket, Heavy Lift: On



Boom Length	Unit	3000 mm/10'0"		4500 mm/15'0"		6000 mm/20'0"		7500 mm/25'0"		9000 mm/30'0"		mm ft/in		
		kg lb	kg lb	kg lb	kg lb	kg lb	kg lb	kg lb	kg lb	kg lb	kg lb	kg lb	kg lb	
9000 mm 30'0"	kg lb											*10 700	*10 700	6500
7500 mm 25'0"	kg lb							*12 300 *23,500	12 300 *23,500			*9900 *21,950	*9900 *21,950	7780 25'2"
6000 mm 20'0"	kg lb					*31,050	*31,050	*12 950 *28,250	12 100 26,000			*9700 *21,350	9600 21,350	8610 28'0"
4500 mm 15'0"	kg lb			*21 250 *45,500	*21 250 *45,500	*16 300 *35,200	*16 300 *35,200	*13 850 *30,100	11 700 25,200	*11 300	8750	*9850 *21,600	8550 18,950	9110 29'9"
3000 mm 10'0"	kg lb			*25 850 *55,500	23 700 51,100	*18 500 *39,900	15 550 33,550	*14 950 *32,400	11 250 24,200	12 900	8550	*10 300 *22,600	8050 17,750	9340 30'7"
1500 mm 5'0"	kg lb			*22 700 *54,400	22 450 48,350	*20 100 *43,500	14 800 31,950	*15 850 *34,350	10 800 23,300	12 700	8300	*11 100 *24,450	7900 17,350	9330 30'7"
0 mm 0'0"	kg lb			*26 650 *61,000	22 050 47,400	*20 700 *44,850	14 400 31,000	*16 250 *35,150	10 550	12 550	8200	12 400 27,350	8100 17,850	9070 29'8"
-1500 mm -5'0"	kg lb	*18 950 *42,800	*18 950 *42,800	*26 600 *57,700	22 050 47,350	*20 150 *43,650	14 250 30,650	*15 800 *34,100	10 450			*13 300 *29,250	8800 19,400	8530 27'11"
-3000 mm -10'0"	kg lb	*30 650 *66,600	*30 650 *66,600	*23 600 *51,100	22 300 47,900	*18 250 *39,300	14 350 30,950	*13 800	10 550			*13 300 *29,250	10 300 22,850	7660 24'11"
-4500 mm -15'0"	kg lb			*18 350 *39,200	*18 350 *39,200	*13 700 *28,650	*13 700 *28,650					*12 600 *27,550	*12 600 *27,550	6310 20'5"



ISO 10567:2007



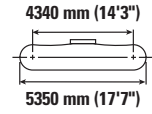
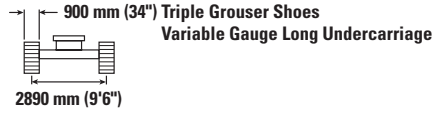
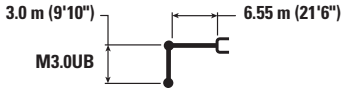
\* Indicates that the load is limited by hydraulic lifting capacity rather than tipping load. The above loads are in compliance with hydraulic excavator lift capacity standard ISO 10567:2007. They do not exceed 87% of hydraulic lifting capacity or 75% of tipping load. Weight of all lifting accessories must be deducted from the above lifting capacities. Lifting capacities are based on the machine standing on a firm, uniform supporting surface. The use of a work tool attachment point to handle/lift objects, could affect the machine lift performance.

Lift capacity stays with ±5% for all available track shoes.

Always refer to the appropriate Operation and Maintenance Manual for specific product information.

# 352 Hydraulic Excavator Specifications

## Mass Boom Lift Capacities – Counterweight: 9.8 mt (21,605 lb) – without Bucket, Heavy Lift: On



		3000 mm/10'0"		4500 mm/15'0"		6000 mm/20'0"		7500 mm/25'0"		9000 mm/30'0"		mm ft/in		
9000 mm 30'0"	kg lb											*10 700	*10 700	6500
7500 mm 25'0"	kg lb							*12 300 <b>*23,500</b>	*12 300 <b>*23,500</b>			*9900 <b>*21,950</b>	*9900 <b>*21,950</b>	7780 <b>25'2"</b>
6000 mm 20'0"	kg lb					*31,050 <b>*31,050</b>	*31,050 <b>*31,050</b>	*12 950 <b>*28,250</b>	12 250 <b>26,350</b>			*9700 <b>*21,350</b>	*9700 <b>*21,350</b>	8610 <b>28'0"</b>
4500 mm 15'0"	kg lb			*21 250 <b>*45,500</b>	*21 250 <b>*45,500</b>	*16 300 <b>*35,200</b>	*16 300 <b>*35,200</b>	*13 850 <b>*30,100</b>	11 850 <b>25,500</b>	*11 300 8850	8850	*9850 <b>*21,600</b>	8700 <b>19,200</b>	9110 <b>29'9"</b>
3000 mm 10'0"	kg lb			*25 850 <b>*55,500</b>	24 000 <b>51,750</b>	*18 500 <b>*39,900</b>	15 750 <b>33,950</b>	*14 950 <b>*32,400</b>	11 400 <b>24,500</b>	*12 950 <b>28,150</b>	8650 <b>18,600</b>	*10 300 <b>*22,600</b>	8150 <b>17,950</b>	9340 <b>30'7"</b>
1500 mm 5'0"	kg lb			*22 700 <b>*54,400</b>	*22 700 <b>49,000</b>	*20 100 <b>*43,500</b>	15 000 <b>32,350</b>	*15 850 <b>*34,350</b>	10 950 <b>23,600</b>	12 850 <b>27,650</b>	8450 <b>18,150</b>	*11 100 <b>*24,450</b>	8000 <b>17,600</b>	9330 <b>30'7"</b>
0 mm 0'0"	kg lb			*26 650 <b>*61,000</b>	22 350 <b>48,050</b>	*20 700 <b>*44,850</b>	14 600 <b>31,400</b>	*16 250 <b>*35,150</b>	10 700 <b>23,000</b>	12 700 8300	8300	*12 550 <b>*27,600</b>	8250 <b>18,100</b>	9070 <b>29'8"</b>
-1500 mm -5'0"	kg lb	*18 950 <b>*42,800</b>	*18 950 <b>*42,800</b>	*26 600 <b>*57,700</b>	22 350 <b>48,000</b>	*20 150 <b>*43,650</b>	14 450 <b>31,100</b>	*15 800 <b>*34,100</b>	10 550 <b>22,800</b>			*13 300 <b>*29,250</b>	8900 <b>19,700</b>	8530 <b>27'11"</b>
-3000 mm -10'0"	kg lb	*30 650 <b>*66,600</b>	*30 650 <b>*66,600</b>	*23 600 <b>*51,100</b>	22 600 <b>48,550</b>	*18 250 <b>*39,300</b>	14 550 <b>31,350</b>	*13 800 <b>31,350</b>	10 700			*13 300 <b>*29,250</b>	10 450 <b>23,150</b>	7660 <b>24'11"</b>
-4500 mm -15'0"	kg lb			*18 350 <b>*39,200</b>	*18 350 <b>*39,200</b>	*13 700 <b>*28,650</b>	*13 700 <b>*28,650</b>					*12 600 <b>*27,550</b>	*12 600 <b>*27,550</b>	6310 <b>20'5"</b>



ISO 10567:2007



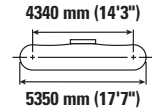
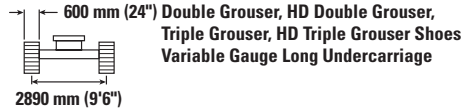
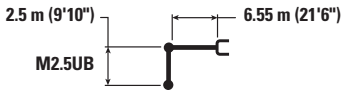
\* Indicates that the load is limited by hydraulic lifting capacity rather than tipping load. The above loads are in compliance with hydraulic excavator lift capacity standard ISO 10567:2007. They do not exceed 87% of hydraulic lifting capacity or 75% of tipping load. Weight of all lifting accessories must be deducted from the above lifting capacities. Lifting capacities are based on the machine standing on a firm, uniform supporting surface. The use of a work tool attachment point to handle/lift objects, could affect the machine lift performance.

Lift capacity stays with ±5% for all available track shoes.

Always refer to the appropriate Operation and Maintenance Manual for specific product information.

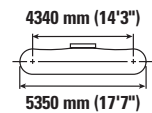
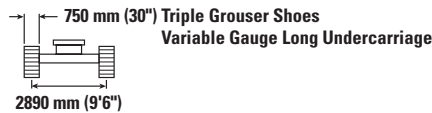
# 352 Hydraulic Excavator Specifications

## Mass Boom Lift Capacities – Counterweight: 9.8 mt (21,605 lb) – without Bucket, Heavy Lift: On



Boom Length mm ft/in	Unit	3000 mm/10'0"		4500 mm/15'0"		6000 mm/20'0"		7500 mm/25'0"		mm ft/in		
7500 mm 25'0"	kg lb									*13 000 *28,700	12 800 *28,700	7220 23'4"
6000 mm 20'0"	kg lb					*15 350 *33,300	*15 350 *33,300	*13 750 *30,100	11 900 25,500	*12 700 *27,950	10 400 23,200	8110 26'5"
4500 mm 15'0"	kg lb			*23 050 *49,350	*23 050 *49,350	*17 250 *37,300	16 150 34,800	*14 550 *31,600	11 500 24,800	*12 900 *28,300	9,200 20,350	8640 28'3"
3000 mm 10'0"	kg lb					*19 300 *41,650	15 250 32,900	*15 500 *33,650	11 100 23,900	13 000 28,700	8600 19,000	8890 29'1"
1500 mm 5'0"	kg lb			*39,850	*39,850	*20 600 *44,600	14 600 31,500	*16 250 *35,200	10 700 23,100	12 850 28,300	8450 18,600	8870 29'1"
0 mm 0'0"	kg lb			*25 150 *58,950	21 950 47,200	*20 850 *45,150	14 300 30,800	16 250 35,000	10 500 22,600	13 350 29,450	8750 19,250	8600 28'2"
-1500 mm -5'0"	kg lb	*19 650 *44,650	*19 650 *44,650	*25 650 *55,700	22 050 47,400	*19 850 *43,000	14 250 30,650	*15 500 *33,350	10 450 22,550	*14 050 *30,950	9600 21,150	8030 26'3"
-3000 mm -10'0"	kg lb	*26 950 *58,750	*26 950 *58,750	*22 100 *47,900	*22 100 *47,900	*17 300 *37,200	14 450 31,150			*13 850 *30,450	11 550 25,600	7090 23'1"

## Mass Boom Lift Capacities – Counterweight: 9.8 mt (21,605 lb) – without Bucket, Heavy Lift: On



Boom Length mm ft/in	Unit	3000 mm/10'0"		4500 mm/15'0"		6000 mm/20'0"		7500 mm/25'0"		mm ft/in		
7500 mm 25'0"	kg lb									*13 000 *28,700	12 900 *28,700	7220 23'4"
6000 mm 20'0"	kg lb					*15 350 *33,300	*15 350 *33,300	*13 750 *30,100	12 000 25,800	*12 700 *27,950	10 550 23,450	8110 26'5"
4500 mm 15'0"	kg lb			*23 050 *49,350	*23 050 *49,350	*17 250 *37,300	16 300 35,150	*14 550 *31,600	11 650 25,050	*12 900 *28,300	9300 20,600	8640 28'3"
3000 mm 10'0"	kg lb					*19 300 *41,650	15 450 33,300	*15 500 *33,650	11 200 24,150	13 200 29,050	8700 19,200	8890 29'1"
1500 mm 5'0"	kg lb			*39,850	*39,850	*20 600 *44,600	14 800 31,900	*16 250 *35,200	10 850 23,350	13 000 28,650	8550 18,850	8870 29'1"
0 mm 0'0"	kg lb			*25 150 *58,950	22 200 47,700	*20 850 *45,150	14 450 31,150	*16 350 *35,450	10 600 22,900	13 500 29,800	8850 19,450	8600 28'2"
-1500 mm -5'0"	kg lb	*19 650 *44,650	*19 650 *44,650	*25 650 *55,700	22 300 47,900	*19 850 *43,000	14 400 31,050	*15 500 *33,350	10 600 22,850	*14 050 *30,950	9700 21,450	8030 26'3"
-3000 mm -10'0"	kg lb	*26 950 *58,750	*26 950 *58,750	*22 100 *47,900	*22 100 *47,900	*17 300 *37,200	14 600 31,500			*13 850 *30,450	11 650 25,900	7090 23'1"



ISO 10567:2007



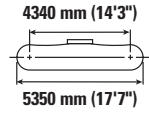
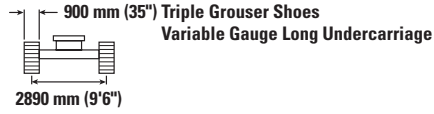
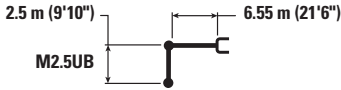
\* Indicates that the load is limited by hydraulic lifting capacity rather than tipping load. The above loads are in compliance with hydraulic excavator lift capacity standard ISO 10567:2007. They do not exceed 87% of hydraulic lifting capacity or 75% of tipping load. Weight of all lifting accessories must be deducted from the above lifting capacities. Lifting capacities are based on the machine standing on a firm, uniform supporting surface. The use of a work tool attachment point to handle/lift objects, could affect the machine lift performance.

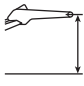


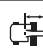



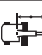




Lift capacity stays with ±5% for all available track shoes.

Always refer to the appropriate Operation and Maintenance Manual for specific product information.

# 352 Hydraulic Excavator Specifications

## Mass Boom Lift Capacities – Counterweight: 9.8 mt (21,605 lb) – without Bucket, Heavy Lift: On



	3000 mm/10'0"		4500 mm/15'0"		6000 mm/20'0"		7500 mm/25'0"				mm ft/in	
												
7500 mm 25'0"	kg lb									*13 000 *28,700	*13 000 *28,700	7220 23'4"
6000 mm 20'0"	kg lb				*15 350 *33,300	*15 350 *33,300	*13 750 *30,100	12 150 26,100	*12 700 *27,950	10 650 23,750	8640 28'3"	8110 26'5"
4500 mm 15'0"	kg lb			*23 050 *49,350	*23 050 *49,350	*17 250 *37,300	16 500 35,550	*14 550 *31,600	11 800 25,400	*12 900 *28,300	9450 20,850	8640 28'3"
3000 mm 10'0"	kg lb					*19 300 *41,650	15 650 33,700	*15 500 *33,650	11 350 24,450	13 350 29,450	8890 19,450	8890 29'1"
1500 mm 5'0"	kg lb			*39,850	*39,850	*20 600 *44,600	15 000 32,300	*16 250 *35,200	11 000 23,700	13 200 29,100	8700 19,100	8870 29'1"
0 mm 0'0"	kg lb			*25 150 *58,950	22 500 48,350	*20 850 *45,150	14 650 31,550	*16 350 *35,450	10 750 23,200	13 700 30,200	8950 19,750	8600 28'2"
-1500 mm -5'0"	kg lb	*19 650 *44,650	*19 650 *44,650	*25 650 *55,700	22 600 48,550	*19 850 *43,000	14 600 31,450	*15 500 *33,350	10 750 23,150	*14 050 *30,950	9850 21,700	8030 26'3"
-3000 mm -10'0"	kg lb	*26 950 *58,750	*26 950 *58,750	*22 100 *47,900	*22 100 *47,900	*17 300 *37,200	14 800 31,950			*13 850 *30,450	11 850 26,250	7090 23'1"



ISO 10567:2007



\* Indicates that the load is limited by hydraulic lifting capacity rather than tipping load. The above loads are in compliance with hydraulic excavator lift capacity standard ISO 10567:2007. They do not exceed 87% of hydraulic lifting capacity or 75% of tipping load. Weight of all lifting accessories must be deducted from the above lifting capacities. Lifting capacities are based on the machine standing on a firm, uniform supporting surface. The use of a work tool attachment point to handle/lift objects, could affect the machine lift performance.

Lift capacity stays with ±5% for all available track shoes.

Always refer to the appropriate Operation and Maintenance Manual for specific product information.

# 352 Hydraulic Excavator Specifications

## Bucket Specifications and Compatibility

	Linkage	Width		Capacity		Weight		Fill	Long Variable Gauge Undercarriage				
		mm	in	m <sup>3</sup>	yd <sup>3</sup>	kg	lb		%	9.8 mt (21,605 lb)/9.4 mt (20,723 lb) with CTWT RMVL			
										Reach Boom 6.9 m (22'8")		Mass Boom 6.55 m (21'6")	
									R2.9 (9'6")	R3.35 (11'0")	M2.5 (8'2")	M3.0 (9'10")	
<b>Pin-On (No Quick Coupler)</b>													
Severe Duty Spade	TB	1700	67	2.50	3.27	2408	5,309	90	●	●			
Heavy Duty	UB	1750	69	3.00	3.92	2845	6,271	100			●	⊙	
	CW55-UB	1950	77	3.50	4.58	2799	6,170	100			⊙	⊖	
	UB	2000	79	3.60	4.71	3102	6,838	100			⊖	○	
Severe Duty Spade	UB	1950	77	3.50	4.58	3091	6,814	90			⊙	⊖	
	CW55-UB	1950	77	3.50	4.58	3014	6,644	90			⊙	⊖	
	UB	2000	79	3.60	4.71	3187	7,026	90			⊙	⊖	
Maximum load with pin-on (payload + bucket)								kg	8370	7780	9060	8230	
								lb	18,453	17,152	19,974	18,144	
<b>With Pin Grabber Coupler</b>													
Severe Duty Spade	TB	1700	67	2.50	3.27	2408	5,309	90	●	⊙			
Maximum load with pin-on (payload + bucket)								kg	7345	6755	8035	7205	
								lb	16,193	14,893	17,715	15,885	
<b>With CW Coupler</b>													
Heavy Duty	UB	1750	69	3.00	3.92	2845	6,271	100			⊙	⊖	
	CW55-UB	1950	77	3.50	4.58	2799	6,170	100			⊖	○	
	UB	2000	79	3.60	4.71	3102	6,838	100			⊖	○	
Severe Duty Spade	UB	1950	77	3.50	4.58	3091	6,814	90			⊖	○	
	CW55-UB	1950	77	3.50	4.58	3014	6,644	90			⊖	○	
	UB	2000	79	3.60	4.71	3187	7,026	90			⊖	○	
Maximum load with coupler (payload + bucket)								kg	7591	7001	8281	7451	
								lb	16,736	15,435	18,257	16,427	

The above loads are in compliance with hydraulic excavator standard EN474-5:2006 + A3:2013, they do not exceed 87% of hydraulic lifting capacity or 75% of tipping capacity with front linkage fully extended at ground line with bucket curled. Capacity based on ISO 7451:2007.

### Maximum Material Density:

- 2100 kg/m<sup>3</sup> (3,500 lb/yd<sup>3</sup>)
- ⊙ 1800 kg/m<sup>3</sup> (3,000 lb/yd<sup>3</sup>)
- ⊖ 1500 kg/m<sup>3</sup> (2,500 lb/yd<sup>3</sup>)
- 1200 kg/m<sup>3</sup> (2,000 lb/yd<sup>3</sup>)

Caterpillar recommends using appropriate work tools to maximize the value customers receive from our products. Use of work tools, including buckets, which are outside of Caterpillar's recommendations or specifications for weight, dimensions, flows, pressures, etc. may result in less-than-optimal performance, including but not limited to reductions in production, stability, reliability, and component durability. Improper use of a work tool resulting in sweeping, prying, twisting and/or catching of heavy loads will reduce the life of the boom and stick.

# 352 Hydraulic Excavator Specifications

## Attachments Offering Guide

Not all Attachments are available in all regions. Consult your Cat dealer for configurations available in your region.

Match

No Match

### PIN-ON ATTACHMENTS

Undercarriage		L-VG			
Counterweight		9.8 mt (21,605 lb)			
Boom Type		Reach		ME	
Stick Length		2.9 m (9'6")	3.35 m (11'0")	2.5 m (8'2")	3.0 m (9'10")
Hydraulic Hammers	H160 S	✓	✓	✓	✓
	H180 GC S	✓	✓	✓	✓
	H180 S	✓	✓	✓	✓
	H190 S	✓	✓	✓	✓
Multi-Processors	MP332 Concrete Cutter Jaw	✓	✓		
	MP332 Demolition Jaw	✓	✓		
	MP332 Pulverizer Jaw	✓	✓		
	MP332 Shear Jaw	✓	✓		
	MP332 Tank Shear Jaw	✓	✓		
	MP332 Universal Jaw	✓	✓		
	MP332 Concrete Cutter Jaw-Flat Top	✓	✓		
	MP332 Demolition Jaw-Flat Top	✓	✓		
	MP332 Pulverizer Jaw-Flat Top	✓	✓		
	MP332 Shear Jaw-Flat Top	✓	✓		
	MP332 Tank Shear Jaw-Flat Top	✓	✓		
	MP332 Universal Jaw-Flat Top	✓	✓		
	MP345 Concrete Cutter Jaw	✓	✓	✓	✓
	MP345 Demolition Jaw	✓	✓	✓	✓
	MP345 Pulverizer Jaw	✓	✓	✓	✓
	MP345 Shear Jaw	✓	✓	✓	✓
	MP345 Concrete Cutter Jaw-Flat Top	✓	✓	✓	✓
	MP345 Demolition Jaw-Flat Top	✓	✓	✓	✓
	MP345 Pulverizer Jaw-Flat Top	✓	✓	✓	✓
	MP345 Shear Jaw-Flat Top	✓	✓	✓	✓
	MP365 Concrete Cutter Jaw	✓	✓		
	MP365 Demolition Jaw	✓			
	MP365 Pulverizer Jaw	✓			
MP365 Shear Jaw	✓				
Demolition and Sorting Grapples	G345	✓	✓	✓	✓
	G345 Flat Top	✓	✓	✓	✓
Mobile Scrap and Demolition Shears	S3050 Flat Top	✓	✓	✓	✓
Pulverizers	P232 Secondary Pulverizer	✓	✓		
	P245 Secondary Pulverizer	✓	✓	✓	✓
	P332 Primary Pulverizer	✓	✓		
	P332 Primary Pulverizer-Flat Top	✓	✓		
	P345 Primary Pulverizer	✓	✓	✓	✓
	P345 Primary Pulverizer-Flat Top	✓	✓	✓	✓
	P365 Primary Pulverizer	✓		✓	✓

(continued on next page)

# 352 Hydraulic Excavator Specifications

## Attachments Offering Guide *(continued)*

Not all Attachments are available in all regions. Consult your Cat dealer for configurations available in your region.

No Match

1800 kg/m<sup>3</sup> (3,000 lb/yd<sup>3</sup>)

1200 kg/m<sup>3</sup> (2,000 lb/yd<sup>3</sup>)

### PIN-ON ATTACHMENTS *(continued)*

Undercarriage		L-VG			
		9.8 mt (21,605 lb)			
Counterweight		Reach		ME	
		2.9 m (9'6")	3.35 m (11'0")	2.5 m (8'2")	3.0 m (9'10")
Boom Type					
Stick Length					
Orange Peel Grapples	GSH455-1000	●	●		
	GSH455-1500	●	●		
	GSH455-2000	●	●		
	GSH555-1000	●	●		
	GSH555-1500	●	●		
	GSM50-1000	●	●		
	GSM50-1250	●	●		
	GSM50-1500	●	●		
	GSM50-2000	●	●		
	GSM60-1250	●	●	●	●
	GSM60-1500	●	●	●	●
	GSM60-2000	○	○	●	○
	GSM60-2500	○		○	○
	Clamshell Grapples	CTV30-1700	●	●	
CTV30-1900		●	●		
CTV30-2300		●	●		
CTV30-2700		●	○		
CTV30-2900		○	○		
CTV30-3100		○	○		
CTV40-3500				○	

*(continued on next page)*

# 352 Hydraulic Excavator Specifications

## Attachments Offering Guide *(continued)*

Not all Attachments are available in all regions. Consult your Cat dealer for configurations available in your region.

Match     
  \* Working range front only     
  † Allowed usage on machine less than 50%     
  No Match

### CAT PIN GRABBER COUPLER ATTACHMENTS

Undercarriage		L-VG			
Counterweight		9.8 mt (21,605 lb)			
Boom Type		Reach		ME	
Stick Length		2.9 m (9'6")	3.35 m (11'0")	2.5 m (8'2")	3.0 m (9'10")
Hydraulic Hammers	H160 S	✓	✓	✓	✓
	H180 GC S	✓	✓	✓	✓
	H180 S	✓†	✓†	✓	✓
	H190 S	✓†		✓	✓
Multi-Processors	MP332 Concrete Cutter Jaw	✓	✓		
	MP332 Demolition Jaw	✓	✓		
	MP332 Pulverizer Jaw	✓	✓		
	MP332 Shear Jaw	✓	✓		
	MP332 Tank Shear Jaw	✓	✓		
	MP332 Universal Jaw	✓	✓		
	MP332 Concrete Cutter Jaw-Flat Top	✓	✓		
	MP332 Demolition Jaw-Flat Top	✓	✓		
	MP332 Pulverizer Jaw-Flat Top	✓	✓		
	MP332 Shear Jaw-Flat Top	✓	✓		
	MP332 Tank Shear Jaw-Flat Top	✓	✓		
	MP332 Universal Jaw-Flat Top	✓	✓		
	MP345 Concrete Cutter Jaw	✓	✓	✓	✓
	MP345 Demolition Jaw	✓	✓	✓	✓
	MP345 Pulverizer Jaw	✓	✓	✓	✓
	MP345 Shear Jaw	✓	✓	✓	✓
	MP345 Concrete Cutter Jaw-Flat Top	✓	✓	✓	✓
	MP345 Demolition Jaw-Flat Top	✓		✓	✓
	MP345 Pulverizer Jaw-Flat Top	✓		✓	✓
	MP345 Shear Jaw-Flat Top	✓	✓	✓	✓
Demolition and Sorting Grapples	G345	✓	✓†	✓	✓
	G345 Flat Top	✓	✓	✓	✓
Mobile Scrap and Demolition Shears	S3050 Flat Top	✓		✓	
Pulverizers	P232 Secondary Pulverizer	✓	✓		
	P245 Secondary Pulverizer			✓	
	P332 Primary Pulverizer	✓	✓		
	P332 Primary Pulverizer-Flat Top	✓	✓		
	P345 Primary Pulverizer	✓	✓	✓	✓
	P345 Primary Pulverizer-Flat Top	✓		✓	✓*

*(continued on next page)*

# 352 Hydraulic Excavator Specifications

## Attachments Offering Guide (continued)

Not all Attachments are available in all regions. Consult your Cat dealer for configurations available in your region.

Match

\* Working range front only

No Match

### CW-55 DEDICATED COUPLER ATTACHMENTS

Undercarriage		L-VG			
Counterweight		9.8 mt (21,605 lb)			
Boom Type		Reach		ME	
Stick Length		2.9 m (9'6")	3.35 m (11'0")	2.5 m (8'2")	3.0 m (9'10")
Hydraulic Hammers	H160 S	✓	✓	✓	✓
	H180 GC S	✓	✓	✓	✓
	H180 S	✓	✓	✓	✓
	H190 S	✓	✓	✓	✓
Multi-Processors	MP332 Concrete Cutter Jaw	✓	✓		
	MP332 Demolition Jaw	✓	✓		
	MP332 Pulverizer Jaw	✓	✓		
	MP332 Shear Jaw	✓	✓		
	MP332 Tank Shear Jaw	✓	✓		
	MP332 Universal Jaw	✓	✓		
	MP332 Concrete Cutter Jaw-Flat Top	✓	✓		
	MP332 Demolition Jaw-Flat Top	✓	✓		
	MP332 Pulverizer Jaw-Flat Top	✓	✓		
	MP332 Shear Jaw-Flat Top	✓	✓		
	MP332 Tank Shear Jaw-Flat Top	✓	✓		
	MP332 Universal Jaw-Flat Top	✓	✓		
	MP345 Concrete Cutter Jaw	✓	✓	✓	✓
	MP345 Demolition Jaw	✓	✓	✓	✓
	MP345 Pulverizer Jaw	✓	✓	✓	✓
	MP345 Shear Jaw	✓	✓	✓	✓
	MP345 Concrete Cutter Jaw-Flat Top	✓	✓	✓	✓
	MP345 Demolition Jaw-Flat Top	✓	✓	✓	✓
	MP345 Pulverizer Jaw-Flat Top	✓	✓	✓	✓
	MP345 Shear Jaw-Flat Top	✓	✓	✓	✓
	MP365 Concrete Cutter Jaw	✓*		✓	✓*
	MP365 Demolition Jaw			✓*	
	MP365 Pulverizer Jaw			✓*	
MP365 Shear Jaw			✓		
Demolition and Sorting Grapples	G345	✓	✓	✓	✓
	G345 Flat Top	✓	✓	✓	✓
Mobile Scrap and Demolition Shears	S3050 Flat Top	✓		✓	✓
Pulverizers	P232 Secondary Pulverizer	✓	✓		
	P245 Secondary Pulverizer	✓		✓	✓
	P332 Primary Pulverizer	✓	✓		
	P332 Primary Pulverizer-Flat Top	✓	✓		
	P345 Primary Pulverizer	✓	✓	✓	✓
	P345 Primary Pulverizer-Flat Top	✓		✓	✓

(continued on next page)

# 352 Hydraulic Excavator Specifications

## Attachments Offering Guide *(continued)*

Not all Attachments are available in all regions. Consult your Cat dealer for configurations available in your region.

Match  No Match

### BOOM-MOUNT ATTACHMENTS

Undercarriage		L-VG	
Counterweight		9.8 mt (21,605 lb)	
Boom Type		Reach	ME
Mobile Scrap and Demolition Shears	S2090	✓	✓
	S3070 Flat Top	✓	
	S3090 Flat Top	✓	

### Typical Pass Match Guide

For maximum production and efficiency, we recommend that loading and hauling machines are matched to achieve optimal performance.

#### Configuration\*:

Long Variable Gauge undercarriage, Reach boom, R2.9TB (9'6") stick, SD 2.5 m<sup>3</sup> (3.27 yd<sup>3</sup>) bucket, 600 mm (24") triple grouser shoes and 9.8 mt (21,605 lb) counterweight.

#### Passes Required to Fill Trucks to Rated Capacity

Material Type	Material Density	Cat Articulated Trucks			
		725	730 EJ	730	735
Earth	1600 kg/m <sup>3</sup> (2,700 lb/yd <sup>3</sup> )	6	7	7	8
Limestone	1540 kg/m <sup>3</sup> (2,600 lb/yd <sup>3</sup> )		8	8	

\*The indicated pass match reflects the machine configuration, fill factor, and typical material density shown. Changes to machine configurations, fill factors, or material density as well as jobsite-specific factors may influence exact pass match recommendations for your application. Consult your Cat dealer for more information.

## Standard and Optional Equipment

Standard and optional equipment may vary. Consult your Cat dealer for details.

	Standard	Optional		Standard	Optional
<b>BOOMS, STICKS AND LINKAGES</b>			<b>ELECTRICAL SYSTEM</b>		
6.55 m (21'6") Mass boom		✓	Maintenance-free 1,000 CCA batteries (×4)	✓	
6.9 m (22'8") Reach boom		✓	Centralized electrical disconnect switch	✓	
2.5 m (8'2") Mass stick		✓	LED exterior chassis and boom lights	✓	
3.0 m (9'10") Mass stick		✓	Premium surround working lights		✓
2.9 m (9'6") Reach stick		✓	<b>ENGINE</b>		
3.35 m (11'0) Reach stick		✓	115 Amp alternator	✓	
TB family bucket linkage		✓	Cold start block heaters		✓
UB family bucket linkage		✓	Three selectable modes: Power, Smart, Eco	✓	
<b>CAT® TECHNOLOGY</b>			Auto engine speed control	✓	
VisionLink®**	✓		52° C (126° F) high-ambient cooling	✓	
Remote Flash	✓		Hydraulic reverse fan	✓	
Remote Troubleshoot	✓		-18° C (0° F) cold start capability	✓	
Cat Grade connectivity		✓	-32° C (-25° F) cold start capability		✓
Compatibility with radios and base stations from Trimble, Topcon, and Leica	✓		Double element air filter with integrated pre-cleaner	✓	
Capability to install 3D grade systems from Trimble, Topcon, and Leica	✓		Dual stage four micron main filter	✓	
Cat Grade 2D	✓		Inlet air heater		✓
Cat Grade 2D with Attachment Ready Option (ARO)		✓	Engine oil sensor		✓
Cat Grade with 3D single GNSS		✓	10 micron primary filter with water separator	✓	
Cat Grade with 3D dual GNSS		✓	Electric fuel priming pump	✓	
Cat Assist:	✓		Secure start with PIN code	✓	
– Grade Assist			Remote disable	✓	
– Boom Assist			<b>HYDRAULIC SYSTEM</b>		
– Bucket Assist			Boom and stick regeneration circuit	✓	
– Swing Assist			Electronic main control valve	✓	
– Lift Assist			Auto dig boost	✓	
Cat Payload:	✓		Auto heavy lift	✓	
– Static weigh			Auto hydraulic oil warmup	✓	
– Semiauto calibration			Bio hydraulic oil capability	✓	
– Payload/cycle information			Fine swing	✓	
– USB reporting capability			Reverse swing damping valve	✓	
Laser catcher		✓	Auto swing parking brake	✓	
Work tool recognition (PL161)	✓		High performance hydraulic return filter	✓	
Work tool tracking (PL161)	✓		Two speed travel	✓	
Operator Coaching		✓	Combined two-way auxiliary circuit		✓
			Medium-pressure auxiliary circuit		✓
			Quick coupler circuit for CW dedicated		✓
			Hydraulic efficiency monitoring		✓

\*Connect subscription only. Additional subscriptions are available. Contact your Cat dealer for availability.

(continued on next page)

# 352 Standard and Optional Equipment

## Standard and Optional Equipment *(continued)*

Standard and optional equipment may vary. Consult your Cat dealer for details.

	Standard	Optional		Standard	Optional
<b>SAFETY AND SECURITY</b>			<b>SERVICE AND MAINTENANCE</b>		
Caterpillar One Key security system	✓		Integrated vehicle health management system	✓	
2D E-Fence:	✓		Grouped engine oil and fuel filters	✓	
– E-ceiling			Scheduled Oil Sampling (S·O·S <sup>SM</sup> ) ports	✓	
– E-floor			QuickEvac™ maintenance ready		✓
– E-swing			Electric refueling pump with auto shutoff		✓
– E-wall			<b>UNDERCARRIAGE AND STRUCTURES</b>		
– E-cab avoidance			Towing eye on base frame	✓	
Auto hammer stop	✓		Full-length track guiding guards		✓
Lockable external tool/storage box	✓		Segmented three-piece track guiding guards		✓
Lockable door, fuel, and hydraulic tank locks	✓		Swivel guard	✓	
Lockable fuel drain compartment	✓		HD bottom guard	✓	
Service platform with anti-skid plate and recessed bolts	✓		HD travel motor guards	✓	
Right Hand (RH) handrail and handhold	✓		HD rollers	✓	
Signaling/warning horn	✓		Grease lubricated track	✓	
Travel alarm		✓	HD swing frame	✓	
Swing alarm		✓	HD swing bearing	✓	
Ground-level secondary engine shutoff switch	✓		9.8 mt (21,605 lb) counterweight	✓	
Lockable disconnect switch	✓		600 mm (24") HD double grouser shoes		✓
Boom lowering check valve	✓		600 mm (24") triple grouser shoes		✓
Stick lowering check valve	✓		750 mm (30") triple grouser track shoes		✓
Rear and right-hand-sideview cameras	✓		900 mm (35") triple grouser track shoes		✓
360° visibility		✓			
Operator Protective Guards		✓			
Inspection lighting		✓			

	Deluxe	Premium (2P)	Premium (1P)
ROPS	●	●	●
High-resolution 203 mm (8") LCD touchscreen monitor	●	X	X
High-resolution 254 mm (10") LCD touchscreen monitor	○	●	●
Auto bi-level air conditioner	●	●	●
Jog dial and shortcut keys for monitor control	●	●	●
Keyless push-to-start engine control	●	●	●
Height-adjustable console	●	●	●
Tilt-up left-side console	●	●	●
Heated air-suspension seat	●	X	X
Heated and ventilated air-suspension seat	X	●	●
51 mm (2") seat belt	●	●	●
Monitor integrated Bluetooth® radio with USB/Auxiliary ports	●	●	●
12V DC outlets	●	●	●
Document storage	●	●	●
Overhead storage and rear storage with nets	●	●	●
Beverage holder	●	●	●
Cup holder	●	●	●
Openable two-piece front window	●	●	○
One piece front windshield	X	○	●
Rear window emergency exit	●	●	●
Radial wiper with washer	●	X	X
Parallel wiper	X	●	●
Openable polycarbonate skylight hatch	●	●	X
Laminated roof glass	X	X	●
LED dome light	●	●	●
Floor welcome light	●	●	●
Roof sunscreen	●	●	●
Roller front sunscreen	●	●	●
Roller rear sunscreen	○	●	●
Washable floor mat	●	●	●
Beacon ready	●	●	●
Cat Stick Steer	○	○	○
Auxiliary relay	○	○	○

- Standard
- Optional
- X Not available

## Dealer Installed Kit and Attachments

Attachments may vary. Consult your Cat dealer for details.

### CAB

- Radial lower wiper
- Left Hand (LH)/RH electrical pedal for tool control
- Horizontal slider joysticks
- Rain protector plus cab light cover
- 75 mm (3") retractable seat belt

### ELECTRICAL

- Premium surround working lights

### GUARDS

- Mesh guard full front
- Mesh guard lower half front
- Full protecting vandalism guard

### SAFETY AND SECURITY

- Bluetooth receiver kit
  - Bluetooth key fob
- Operator Protective Guards
- Cat Detect – People Detection
  - Cat Command – Remote control kit

The following information applies to the machine at the time of final manufacture as configured for sale in the regions covered in this document. The content of this declaration is valid as of the date issued; however, content related to machine features and specifications are subject to change without notice. For additional information, please see the machine's Operation and Maintenance Manual.

For more information on sustainability in action and our progress, please visit <https://www.caterpillar.com/en/company/sustainability>.

## Engine

- The Cat® C13B engine meets U.S. EPA Tier 4 Final, EU Stage V, and Japan 2014 emission standards.
- Cat diesel engines are required to use ULSD (ultra-low sulfur diesel fuel with 15 ppm of sulfur or less) or ULSD blended with the following lower-carbon intensity fuels\*\* up to:
  - ✓ 20% biodiesel FAME (fatty acid methyl ester)\*
  - ✓ 100% renewable diesel, HVO (hydrogenated vegetable oil) and GTL (gas-to-liquid) fuels

Refer to guidelines for successful application. Please consult your Cat dealer or “Caterpillar Machine Fluids Recommendations” (SEBU6250) for details.

\*Engines with no aftertreatment devices can use higher blends, up to 100% biodiesel.

\*\*Tailpipe greenhouse gas emissions from lower-carbon intensity fuels are essentially the same as traditional fuels.

## Air Conditioning System

- The air conditioning system on this machine contains the fluorinated greenhouse gas refrigerant R134a (Global Warming Potential = 1430). The system contains 1.0 kg (2.2 lb) of refrigerant which has a CO<sub>2</sub> equivalent of 1.430 metric tonnes (1.576 tons).

## Paint

- Based on best available knowledge, the maximum allowable concentration, measured in parts per million (PPM), of the following heavy metals in paint are:
  - Barium < 0.01%
  - Cadmium < 0.01%
  - Chromium < 0.01%
  - Lead < 0.01%

## Sound Performance

ISO 6395:2008 (external) – 108 dB(A)

ISO 6396:2008 (inside cab) – 73 dB(A)

- Hearing protection may be needed when operating with an open operator station and cab (when not properly maintained or doors/windows open) for extended periods or in a noisy environment.

## Oils and Fluids

- Caterpillar factory fills with ethylene glycol coolants. Cat Diesel Engine Antifreeze/Coolant (DEAC) and Cat Extended Life Coolant (ELC) can be recycled. Consult your Cat dealer for more information.
- Cat Bio HYDO™ Advanced is an EU Ecolabel approved biodegradable hydraulic oil.
- Additional fluids are likely to be present, please consult the Operations and Maintenance Manual or the Application and Installation guide for complete fluid recommendations and maintenance intervals.

## Features and Technology

- The following features and technology may contribute to fuel savings and/or carbon reduction. Features may vary. Consult your Cat dealer for details.
  - Smart mode matches machine power to digging requirements automatically
  - Eco mode minimizes fuel consumption for light applications
  - Standard Cat technologies improve operator efficiency by up to 45%
  - Reduce fuel consumption with the high-efficiency hydraulic fan that cools the engine on demand
  - Cut costs with extended maintenance intervals

## Recycling

- The materials included in machines are categorized as below with approximate weight percentage. Because of variations of product configurations, the following values in the table may vary.

Material Type	Weight Percentage
Steel	83.09%
Iron	8.97%
Nonferrous Metal	1.66%
Mixed Metal	0.04%
Mixed-Metal and Nonmetal	0.72%
Plastic	0.62%
Rubber	0.16%
Mixed Nonmetallic	0.13%
Fluid	2.97%
Other	1.64%
Uncategorized	0.00%
Total	100%

- A machine with higher recyclability rate will ensure more efficient usage of valuable natural resources and enhance End-of-Life value of the product. According to ISO 16714:2007 (Earthmoving machinery – Recyclability and recoverability – Terminology and calculation method), recyclability rate is defined as percentage by mass (mass fraction in percent) of the new machine potentially able to be recycled, reused, or both.

All parts in the bill of material are first evaluated by component type based on a list of components defined by the ISO 16714:2007 and Japan CEMA (Construction Equipment Manufacturers Association) standards. Remaining parts are further evaluated for recyclability based on material type.

Because of variations of product configurations, the following value in the table may vary.

Recyclability – 98%

For more complete information on Cat products, dealer services, and industry solutions, visit us on the web at [www.cat.com](http://www.cat.com)

© 2023 Caterpillar  
All rights reserved

Materials and specifications are subject to change without notice. Featured machines in photos may include additional equipment. See your Cat dealer for available options.

CAT, CATERPILLAR, LET'S DO THE WORK, their respective logos, "Caterpillar Corporate Yellow," the "Power Edge" and Cat "Modern Hex" trade dress as well as corporate and product identity used herein, are trademarks of Caterpillar and may not be used without permission. VisionLink is a trademark of Caterpillar Inc., registered in the United States and in other countries.

AEXQ3455-02 (12-2023)  
Replaces AEXQ3455-01  
Build Number: 08C  
(Europe, Turkey)

